



MANAV RACHNA INTERNATIONAL SCHOOL

Scholarship Test Paper

For

Students Studying in Grade - VI (Session 2022-23)

Moving to Grade VII -Session 2023-24

Date: 26.11.2022

Duration: 2 Hours

M.M.: 100

KINDLY FILL IN THE DETAILS

Name: _____

Father's Name: _____

Mother's Name: _____

Examination Centre: Manav Rachna International School _____

Name and Signature of the Invigilator: _____

GENERAL INSTRUCTIONS:

SECTION – A: Logic and Reasoning: 20 marks (Each question carries 2 marks)

SECTION – B: English: 20 marks (Marks have been mentioned against the questions)

SECTION – C: Math: 30 marks (Each question carries 1 mark)

SECTION – D: Science: 30 marks (Each question carries 1 mark)

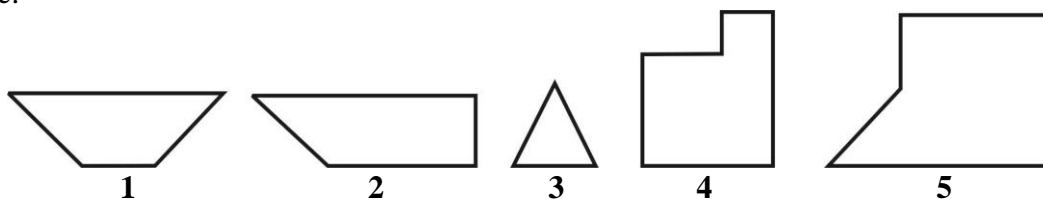
- All sections are compulsory.
- Read each question carefully before answering.
- **Objective Questions need to be tick marked in the question paper itself and submitted.**
- **Subjective Questions need to be attempted in the answer sheets provided and submitted.**

SECTION A LOGIC AND REASONING

Q1. If in the word 'FAVOURITE' all the consonants are arranged on the left in reversed alphabetical order after that on the right of these consonants all the vowels are arranged in alphabetical order then how many letters are there in alphabetical series between third letter from right end and fourth letter from left end?

- a) 2 b) 5 c) 6 d) 8

Q2. Select three figures out of the following five figures which when fitted into each other would form a square.

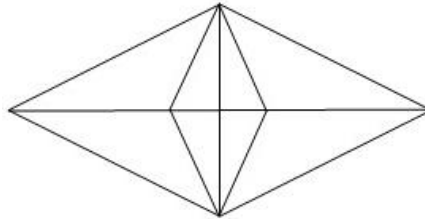


- a) 1, 2, 4 b) 1, 2, 5 c) 5, 3, 1 d) 2, 3, 4

- Q3. Read the following information and answer the question given below.
- i) Six persons P,Q, R, S, T and U are sitting face to face, three in each row.
 - ii) Q is neighbour of U.
 - iii) T is not at the end of row.
 - iv) S is second to the left of U.
- R, the neighbour of T, is sitting diagonally opposite to S.
Which of the following are in one row?

- a) UQR b) SQU c) RTQ d) PQR

- Q4. What is the number of triangles in the figure given below:

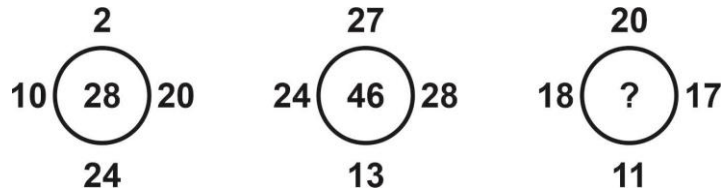


- a) 22 b) 24 c) 16 d) 18

- Q5. The following question consist of two words which have a certain relationship followed by four pairs of words. Select the pair which has the same relationship as the original pair of words.
Wick : Candle

- a) Thread : Wool b) Lead : Pencil c) Light : Darkness d) Quick : Rapid

- Q6. Spot the pattern and choose the most appropriate answer:



- a) 35 b) 33 c) 36 d) 34

- Q7. If by arranging the letters of the word “NESTIN” the name of a game is formed. What is the last and first letter of the word so formed?

- a) E, S b) N, T c) S, T d) E,N

- Q8. The letters are given below following a definite pattern; find out the missing letters to complete the pattern

m_nm_n_an_a_ma_

- a) a m a m m n b) a a m n a n
c) a m m a n m d) a a m m n n

- Q9. How many times do the hands of a clock coincide in a day? Select the correct option from the given alternatives.

- a) 20 b) 21 c) 22 d) 24

Q10. Naman ranks 14th from top and 26th from the bottom in a class.
How many students are there in the class?

a) 31

b) 39

c) 34

d) 33

SECTION B ENGLISH

Q1. Read the passage given below carefully and answer the questions that follow. (10 Marks)

To date happiness has no definite definition. Most people tend to equate happiness with fun, good living and plenty of money. If happiness were synonymous with all this, rich people with all their luxuries and countless parties would be perpetually happy. In reality, they are frequently, acutely unhappy despite their riches and ability to indulge in fun activities at will. Fun is what we experience during an act; happiness is that intangible something we experience after an act. We may have fun watching a movie, going for shopping, meeting friends – these are all fun activities that afford us fleeting moments of relaxation and enjoyment. Happiness, on the other hand, is a stronger, deeper and more abiding emotion.

If we perceive happiness as the ultimate goal, we must also devise a way to reach that goal. The way to happiness is not a smooth broad highway along which we can cruise at a comfortable speed. It is a path through rocky and rugged terrain and the going can become very tough at times. At these times we have to roll up our sleeves and with pitch fork and shovel make our way onwards. This pursuit of happiness lasts a lifetime. Great happiness is earned only by great effort and effort not in spurts but diligent, consistent effort.

Difficult endeavors – such as the raising of children, establishing deeper relationships with loved ones, trying to do something worthwhile in life – hold the promise of a world of happiness.

Happiness is not a permanent vacation. Another prevalent belief is that if one were rich enough not to have to work, one would be blissfully happy. But a job is more than just a pay cheque. Almost all religions teach us that work is worship. Work holds the key to happiness as doing something which increases confidence and self-worth. It brings on a feeling of satisfaction of doing something. Job satisfaction comes less from how much one earns than from the challenge of the job. Of course, the pay cheques count. It would be unrealistic to suggest that one could be happy without a basic shelter, roaming the streets with an empty stomach.

1. What is the common opinion about happiness? (2)
2. What are the sources of true happiness? (2)
3. How does work hold the key to happiness? (2)
4. What is the source of job satisfaction? (2)
5. a) Find words from the passage that mean the same as: (1)
 - i. occurring repeatedly (para 1)
 - ii. to realize or understand something (para 2)
- b) Find words from the passage that mean the opposite of: (1)
 - i. permanently
 - ii. casual

Q2. Writing Task**(10 Marks)**

You have come across the World Population Projections in the newspaper and also the effect of increasing population on certain global issues. Visualize the problems that the world is going to face if population continues to grow at the present rate. Write a paragraph of 120-150 words on 'Time to Awaken to the Global Reality'.

OR

COVID pandemic restricted us to our homes for a long time. Write a paragraph of about 120–150 words about 'Learnings in the Lockdown Time'.

**SECTION C
MATH**

- Q1. A student multiplied 3759 by 231 instead of multiplying by 213. How much was his product greater than the correct product?
a) 67662 b) 67672 c) 67882 d) 67626
- Q2. To stitch a shirt, 2 m 50 cm cloth is needed. Out of 40 m cloth, how many shirts can be stitched?
a) 16 b) 13 c) 18 d) 15
- Q3. Which of the following is not true ?
a) $(7 + 8) + 9 = 7 + (8 + 9)$ b) $(7 \times 8) \times 9 = 7 \times (8 \times 9)$
c) $7 + 8 \times 9 = (7 + 8) \times (7 + 9)$ d) $7 \times (8 + 9) = (7 \times 8) + (7 \times 9)$
- Q4. The cost of putting a fence around a square field at ₹ 2.50 per metre is ₹ 200. The length of each side of the field is
a) 40 m b) 20 m c) 80 m d) none of these
- Q5. Bajinder runs ten times around a square track and covers 4km. Find the total length of the track.
a) 125 m b) 200 m c) 100 m d) 400 m
- Q6. Rakesh spends ₹ x per week and saves ₹ y daily. What is his income after 4 weeks?
a) $(4x + 4y)$ rupees b) $4(x + y)$ rupees
c) $4(x + 7y)$ rupees d) none of these
- Q7. Shikhar claims that two diameters of a circle always intersect. Is his claim correct?
a) Yes this is because the diameter passes through the centre of the circle.
b) Yes length of the diameter is constant and its two times the radius of the circle.
c) No diameter are the longest chord and they may not intersect.
d) None of the above.

- Q8. If x and y are negative, then which of the following statements is/are always true?
 I. $x + y$ is positive II. xy is positive III. $x - y$ is positive
- a) I only b) II only c) III only d) I and III only
- Q9. If $\frac{4}{5}$ of an estate be worth ₹ 16,800, then the value of $\frac{3}{7}$ of the estate will be:
- a) ₹ 90,000 b) ₹ 72,000 c) ₹ 21,000 d) ₹ 9000
- Q10. The value of $x - y + xy$ for $x = -1$, $y = -2$ is:
- a) 0 b) 3 c) -1 d) -5
- Q11. A rectangular floor is 2016 cm long and 1560 cm broad. It is to be paved with square tiles. What could be the least possible length of the tile?
- a) 24cm b) 48 cm c) 56 cm d) 72 cm
- Q12. $32.4567 \times 543.2 \times 0.0004$ is the same as
- a) $32456.7 \times 5432 \times 4$ b) $32.4567 \times 5.432 \times 4$
 c) $324.567 \times 0.005432 \times 4$ d) $324567 \times 5432 \times 4$
- Q13. Raman bought 23 things from Jio Mart. He bought five more shirts than jeans and two fewer shorts than shirts. If 'z' represents the total number of jeans, then which mathematical statement can be used to find how many of each thing are bought?
- a) $z + (z+5) + (z+3) = 23$ b) $z + (z-5) + (z-3) = 23$
 c) $(z+5) + (z+3) = 23$ d) $z + (z+3) = 23$
- Q14. 320 km distance is to be covered partially by bus and partially by train. Bus covers 180 km distance with a speed of 40 km/h and the rest of the distance is covered by the train at a speed of 70 km/h. Find the time taken by a passenger to cover the whole distance.
- a) 4 hours b) 4hours 30 min c) 6 hours d) 6 hours 30 min
- Q15. The value of $\frac{1}{2 + \frac{1}{3 + \frac{1}{4 + \frac{1}{5}}}}$
- a) $\frac{5}{46}$ b) $\frac{68}{157}$ c) $\frac{157}{68}$ d) $\frac{21}{110}$
- Q16. If a bicycle wheel has 48 spokes, then the angle between a pair of adjacent spokes is _____
- a) $\left(\frac{15}{2}\right)^\circ$ b) $\left(\frac{11}{2}\right)^\circ$ c) $\left(\frac{2}{11}\right)^\circ$ d) $\left(\frac{2}{15}\right)^\circ$

Q25. In a magic square, if each row, column and diagonal have same sum, then the values of A and B respectively are

1	-10	0
A	-3	-2
-6	4	B

-7,-4 b) -4,-7 c) -4,-6 d) -6,-4

Q26. Two numbers are respectively 20% and 50% more than a third number. The ratio of the two numbers is:

a) 2 : 5 b) 3 : 5 c) 4 : 5 d) 6 : 7

Q27. Make the greatest and the smallest four digit number using any four different digits with digit 5 always at thousands place.

a) 5986, 5012 b) 5987, 5012
c) 5999, 5000 d) 5789, 5120

Q28. A number for which sum of all its factors is equal to twice the number is called

a) perfect number b) even number c) odd number d) prime number

Q29. Which of the following numbers form a pattern?

a) - 6 , - 3 , 0 , 3 b) - 5 , - 3 , - 2 , 0 c) 0 , 2 , 3 , 4 d) 1 , 2 , 4 , 6

Q30. The number of diagonals in a regular octagon are:

a) 10 b) 20 c) 30 d) 0

SECTION D SCIENCE

Q1. Sea food specially, seaweeds are rich source of which of the following minerals?

a) Calcium b) Phosphorus c) Iodine d) Iron

Q2. In which of the following cases the heat energy is given out?

i) When water boils.
ii) When ice melts
iii) When water freezes to ice
iv) When water vapour condenses to water

a) i, ii and iii b) iii c) iv d) iii and iv

Q3. A metallic piece is dropped into copper sulphate solution. After some time, the blue colour of the solution changes to green. The change which has occurred is

a) Physical and reversible change b) Physical and irreversible change
c) Chemical and reversible change d) Chemical and irreversible change

- Q4. When ice melts, it forms water. When water boils, it forms steam. Ice, water and steam have very different properties still these changes are considered as physical changes. Why?
- A physical change involves the formation of substances with different properties.
 - There is no difference in the chemical composition of ice, water and steam, only physical state is different.
 - There is no difference in the taste of steam, ice and water hence it is a physical change.
 - There is no difference in colour of steam, ice and water hence it is a physical change.

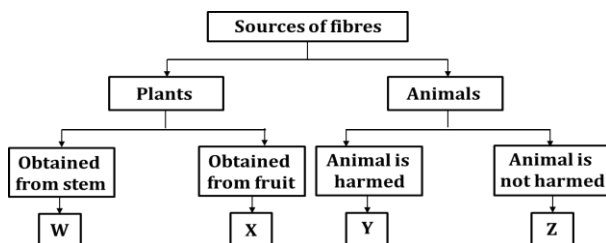
Q5. Silk cotton is obtained from the seeds of which tree:

- cotton
- flax
- coir
- kapok

Q6. Some carnivores and omnivores are known as _____.

- decomposer
- parasites
- herbivores
- scavengers

Q7. Refer the flowchart and select the correct option.



- x- flax ,y- silk
- w-cotton, y-silk
- w- flax, z-wool
- x-jute, z-wool

Q8. If you pour a few drops of petrol on your palm, you will feel cool as it evaporates. What type of reaction is this?

- endothermic
- exothermic
- chemical
- slow

Q9. Match the entries in column-1 with those in column-2

	Column-1		Column-2
a.	A chalk water mixture	1.	A gaseous mixture
b.	A glucose solution	2.	A heterogeneous solid-liquid mixture
c.	Carbonated water	3.	A homogeneous solid-liquid mixture
d.	Air	4.	A gas –liquid mixture

- a-2,b-3,c-4,d-1
- a-1,b-4,c-2,d-3
- a-2,b-4,c-3,d-1
- a-2,b-4,c-1,d-3

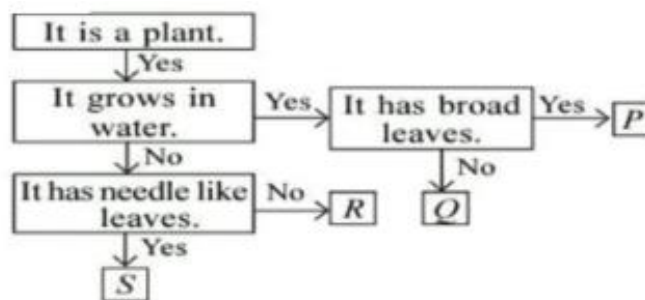
Q10. Study the data given below and identify the food constituents represented by A, B, C & D.

	A (%)	B (%)	C (%)	D (%)
Ghee	0.5	16.5	0	83
Black Gram	25	55	0	20
Potatoes	2	82	16	0

- A- Roughage , B- Carbohydrates, C- Water, D-Fats
- A-Fibre, B-Proteins, C- Fats, D-Iron
- A-Glucose, B- Starch, C-Fibre, D-Fats
- A-Protein, B-Water, C-Carbohydrates, D- Fats

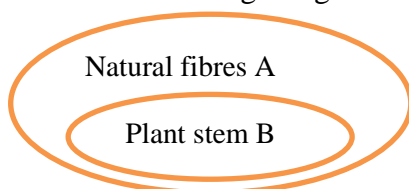
- Q11. Which of the following parts of a banana plant are edible?
- a) Stem b) Stem & Fruits c) Stem, Fruits & Roots d) Stem, Fruit & Flower
- Q12. Match the following deficiency diseases and the corresponding nutrients
- | Column I | Column II |
|--------------------|------------------|
| A) Night Blindness | a) Iodine |
| B) Anaemia | b) Thiamine |
| C) Goitre | c) Retinol |
| D) BeriBeri | d) Vitamin B12 |
- a) A-d, B-c, C-b, D-a b) A-a, B-b, C-c, D-d
c) A-b, B-c, C-a, D-d d) A-c, B-d, C-a, D-b
- Q13. The underground stems used as food are-
- a) Radish, Potato & Onions b) Ginger, Potato & Turmeric
c) Radish, Carrot & Turnip d) Potato, Ginger & Beetroot
- Q14. Which of the following statements is correct?
- a) Mass of an object varies at different places.
b) Weight of an object varies at different places.
c) Both mass and weight remains constant.
d) Both mass and weight varies at different places
- Q15. Sublimation and Deposition are examples of changes in state that can be exhibited by only few substances. Is this statement true / false?
- a) True, as only Dry Ice can undergo sublimation and deposition.
b) False, as all substances can undergo sublimation and deposition provided they have the right temperature and pressure.
c) True, as only Naphthalene balls can undergo sublimation.
d) True, as only Dry ice and Naphthalene can undergo these rare changes.
- Q16. Assertion (A): When sea water is allowed to stand in shallow pits, water gets heated by sunlight and slowly turns into water vapour through evaporation.
Reason (R): Boiling takes place at all temperatures.
- a) Both A and R are true and R is correct explanation of A.
b) Both A and R are true and R is not the correct explanation of A.
c) A is true but R is false.
d) Both A and R are false.

Q17. Identify the correct option regarding P, Q,R and S from the given flow chart.



- a) S could be a pine tree.
- b) P could be sea weed and Q could be water lily.
- c) P leaves may possess specialized tips called drip trips whereas leaves of R has waxy coating on them.
- d) S could be spruce whereas R could be pine.

Q18. Identify the Fibres A and B from the Venn diagram given:



- a) A: Silk B: Coir.
- b) A: Jute B: Cotton
- c) A: Wool B: Jute
- d) A: Jute B: Cotton

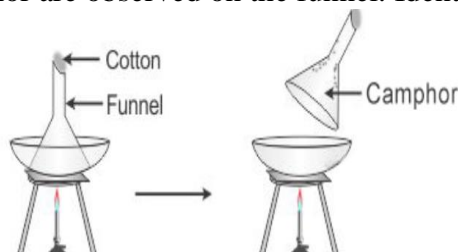
Q19. Identify the term that would best describe the chemical reaction: An endothermic photochemical reaction essential to support life.

- a) photosynthesis in plants
- b) respiration in humans
- c) digestion in organisms
- d) melting of glaciers

Q20. Crystallization of sugar is which kind of change:

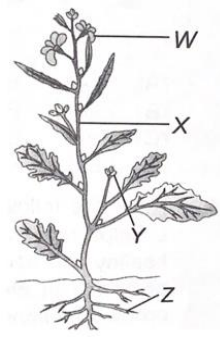
- a) irreversible physical change
- b) irreversible chemical change
- c) reversible physical change
- d) reversible chemical change

Q21. Take 10 g of solid camphor in a china dish and heat in the set up as depicted in the image. After some time deposits of camphor are observed on the funnel. Identify the process(es) taking place:



- a) evaporation and condensation
- b) sublimation and evaporation
- c) evaporation and sublimation
- d) sublimation and condensation

Q22. Refer to the given figure of a typical plant and select the correct option labelled with the examples of plants in which they are edible:



- | | | | | |
|----|-------------|----------------|--------------|------------|
| a) | W-Tapioca | X-Sweet Potato | Y- Pepper | Z- Turnip |
| b) | W- Broccoli | X-Turmeric | Y-Clove | Z-Radish |
| c) | W- Cabbage | X-Onion | Y- Pepper | Z- Carrot |
| d) | W- Broccoli | X-Radish | Y- Asparagus | Z- Brinjal |

Q23. Properties of three solid substances X,Y and Z are given below:

X: Heavy and non-magnetic

Y: Light and non- magnetic

Z: Magnetic

If X,Y and Z are of same size and colour then, which of the following can be used to separate these particles from their mixture?

- | | |
|--|--|
| a) Handpicking followed by filtration | b) Magnetic separation followed by winnowing |
| c) Magnetic separation followed by sieving | d) Sublimation followed by distillation |

Q24. Which of the following is a mismatched pair?

- | | |
|---|---|
| a) Fibrous root- Wheat, Maize | b) Parallel Venation- Banana, Sugarcane |
| c) Reticulate Venation- Mustard, Hibiscus | d) Creeper- Watermelon, Pea plant |

Q25. Which of the following features are related to evaporation of water?

(i) It occurs at 100⁰C

(ii) Bubbles are formed

(iii) Slow process

(iv) Increase with increase in surface area

- | | |
|------------------------------|-----------------------------|
| a) (i) and (iv) only | b) (i), (ii) and (iii) only |
| c) (ii), (iii) and (iv) only | d) (iii) and (iv) only |

Q26. Study the following adaptations in plants and answer the following questions:

(i) Fleshy stem

(ii) Leaves reduced to spine

(iii) Buttress root

(iv) Long root

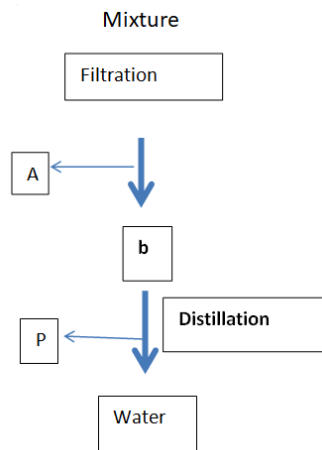
(v) Drip tips

(vi) Broad leaves

Which of the given adaptations are plants inhabiting rainforests(P) and deserts(Q)?

- | | |
|---------------------|-----------------|
| (P) | (Q) |
| a) (i),(iii),(v) | (ii),(iv),(vi) |
| b) (ii), (iii),(iv) | (i), (v), (vi) |
| c) (iii),(iv),(v) | (i), (ii), (vi) |
| d) (iii),(v),(vi) | (i), (ii), (iv) |

Q27. What could be the mixture?



- a) Chalk + Sugar + water
- b) Stones + Rice + Water
- c) Oxygen + Hydrogen + Salt
- d) Water + Sand + Glass

Q28. Which of the following is a parasite?

- a) Mosquito
- b) Cuscuta
- c) Venus Fly trap
- d) Pitcher Plant

Q29. Assertion (A): A diet that contains all the nutrients in the optimum amount is considered as a Balanced Diet.

Reason (R) : Fats are a richer source of energy as they contain less amount of Oxygen in them.

- a) Both A and R are true and R is the correct explanation of A.
- b) Both A and R are true but R is not the correct explanation of A.
- c) A is true but R is false.
- d) A is false but R is true.

Q30. Which of the following statement is true:

- a) Respiration occurs only at night
- b) Photosynthesis in plants are possible only in green coloured leaves
- c) Oxygen and carbon dioxide are replaced in nature through both Photosynthesis and Respiration
- d) Photosynthesis is rare in cactus

